

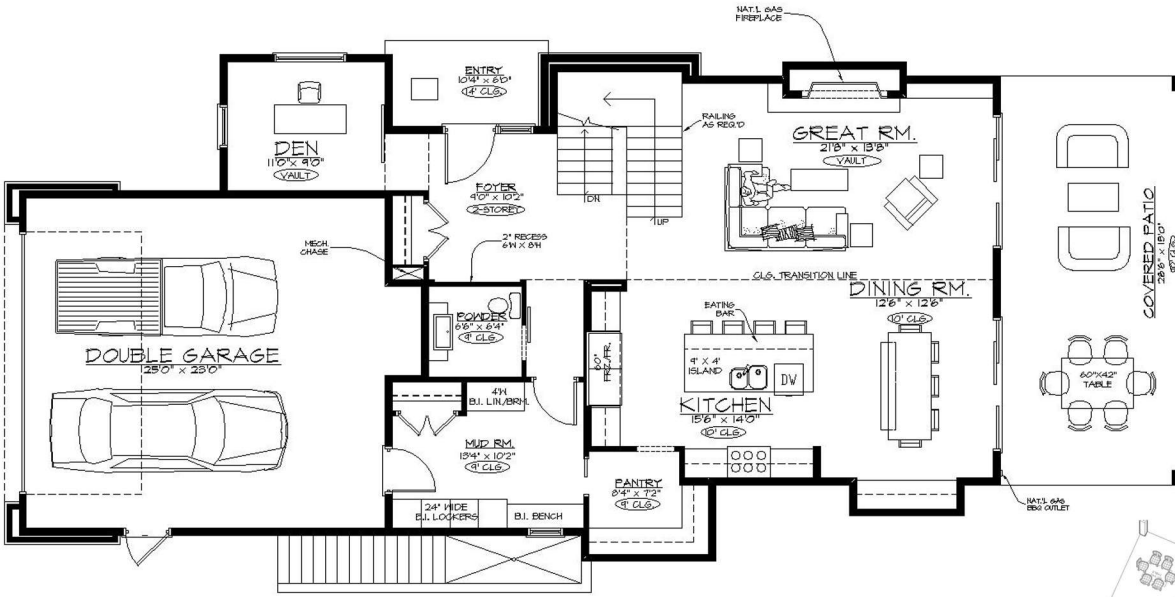
THE ASPEN GROVE

- 2746 FT² FINISHED FLOOR AREA & UNFINISHED BASEMENT
- THREE BEDROOMS + OFFICE
- OPTIONAL FINISHED BASEMENT OR LEGAL SUITE
- OPTIONAL FRONT ENTRIES
- STARTING FROM \$769,900 PLUS LOT

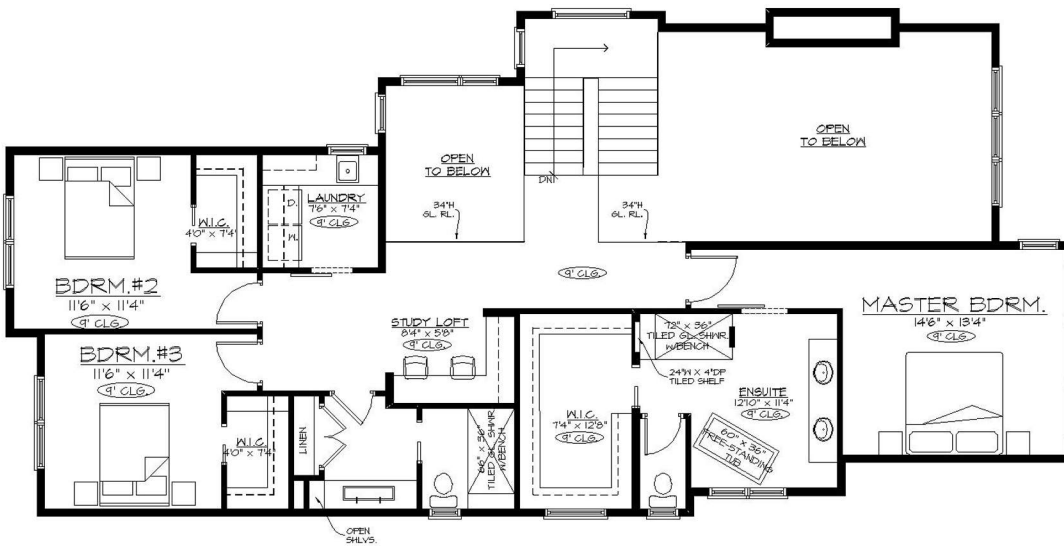
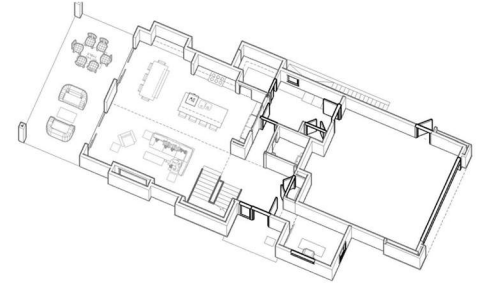
Remember the days of growing up and smelling the freshly baked apple pie? You ran home after playing with your friends to see Mom take out the warm apple pie from the oven! This reminds me of home on the Farm – Inviting and warm. Our newest plan the “Aspen Grove” takes the elements of the house we may have grown up in yet opens up the space and sighting to a simpler time – bright, open, yet elegantly warm. The Modern era meshing with the Farmhouse creates an architectural design that will remain timeless and comfortable for decades to come – a place where you can make wonderful lasting memories.

Align West Homes is an Award Winning Builder based in Kelowna, BC. We fuse dreams, designs and construction expertise together to deliver an exceptional level of personal service when helping customers design plans to fit their lot, budget and needs. We have a unique team utilizing our Interior Decorator, Plan Designers and Certified Builder to create a very unique and quality crafted home. Come visit “The Orchard in Kelowna” to select your lot and stay tuned for our new showhome opening Spring 2020.

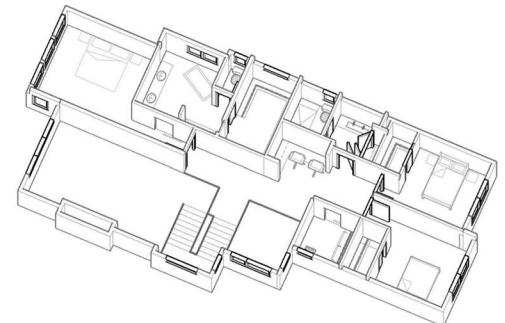


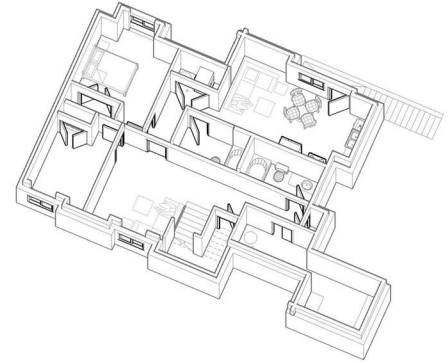
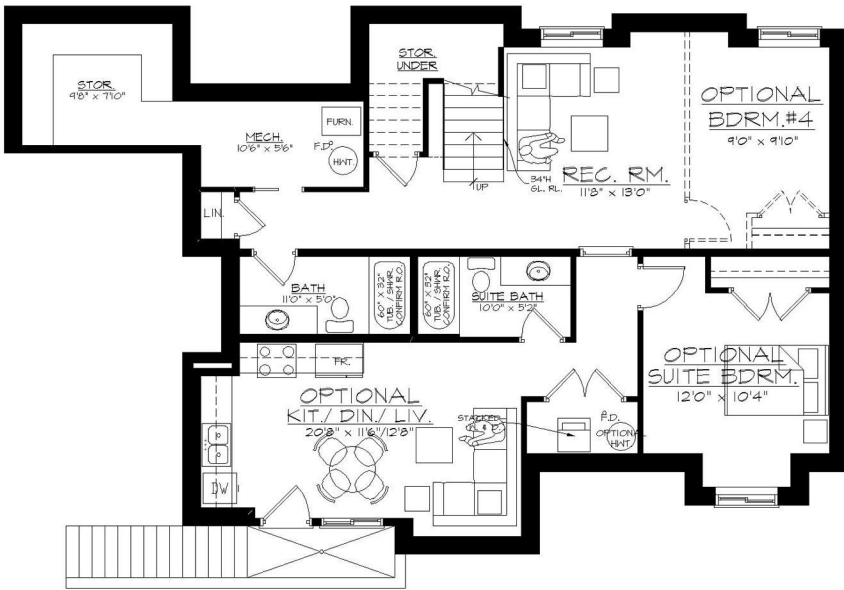


MAIN FLOOR 1425 SQ. FT.
GARAGE AREA 622 SQ. FT.



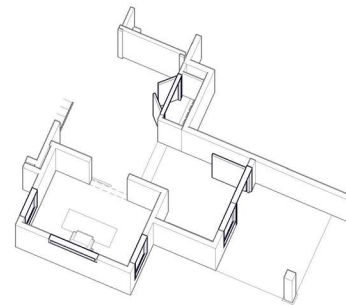
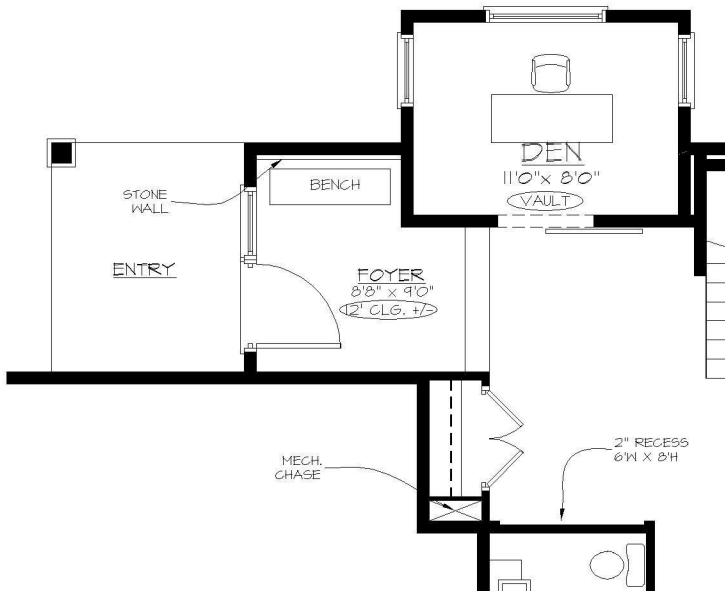
UPPER FLOOR 1321 SQ. FT.





LOWER FLOOR/FOUNDATION PLAN 497 SQ. FT.

OPTIONAL SUITE AREA = 641 SQ. FT.
MECH. / STOR. = 163 sq. ft.



DEN/FOYER
OPTION 'B'

ADDITIONAL 74 SQ. FT.

THE NEWPORT

- 2482 FT² FINISHED FLOOR AREA & UNFINISHED BASEMENT
- THREE BEDROOMS + OFFICE
- OPTIONAL FINISHED BASEMENT OR LEGAL SUITE
- OPTIONAL ROOFTOP TERRACE
- STARTING AT \$689,900 PLUS LOTS

What happens when you design a house plan that remains timeless? Well you start by incorporating the simple open and minimalist architecture of the modern era and add the warmness of wood and stone. We are always willing to adjust our custom designs; however the increased value of a home is in a well thought out design with warm, appealing features adding comfort, style and ease to your everyday life. Take a look at the “Newport”. A fresh new design from Align West Homes that balances space and aesthetics by basing its form on the land its to be built on.

Align West Homes is an Award Winning Builder based in Kelowna, BC. We fuse dreams, designs and construction expertise together to deliver an exceptional level of personal service when helping customers design plans to fit their lot, budget and needs. We have a unique team utilizing our Interior Decorator, Plan Designers and Certified Builder to create a very unique and quality crafted home. Come visit “The Orchard in Kelowna” to select your lot and stay tuned for our new showhome opening Spring 2020.



